

# RACE

*Bytes to Brilliance*



# Concepts to Creations

Since 2013, **RACE** is a leading interior fit-out company specializing in Retail ,F&B and commercial projects. With years of experience in the industry, **RACE** has built a reputation for delivering high-quality designs and exceptional craftsmanship.

Our team of experts is skilled in creating functional and visually appealing spaces that reflect the brand identity of each business.

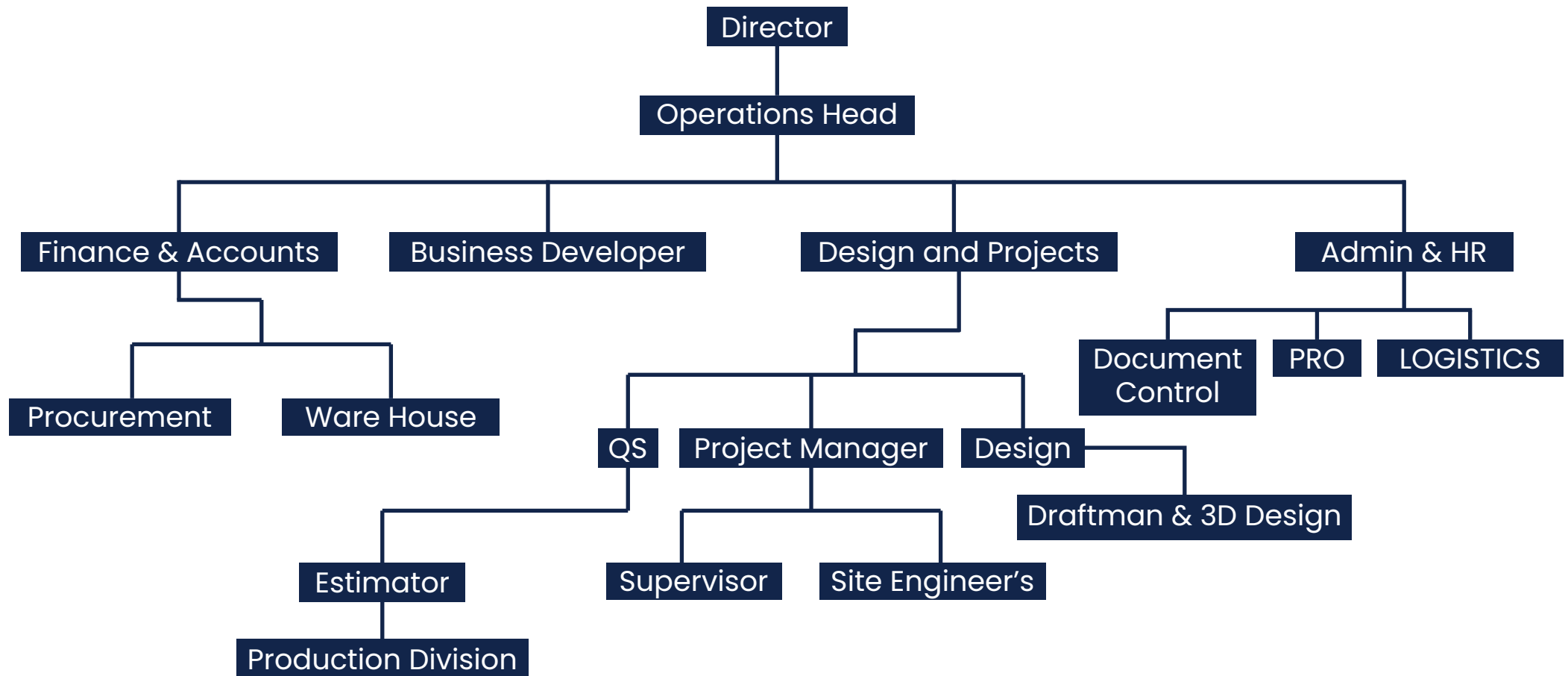
**RACE** provides professional space planning and design services to maximize the potential of any given area. They focus on optimizing layouts, traffic flow, and aesthetics to create harmonious and efficient spaces.

**Interior Contracting | Concept Design | Civil Works | MEP |  
Joinery | Project Management.**



# Management Structure

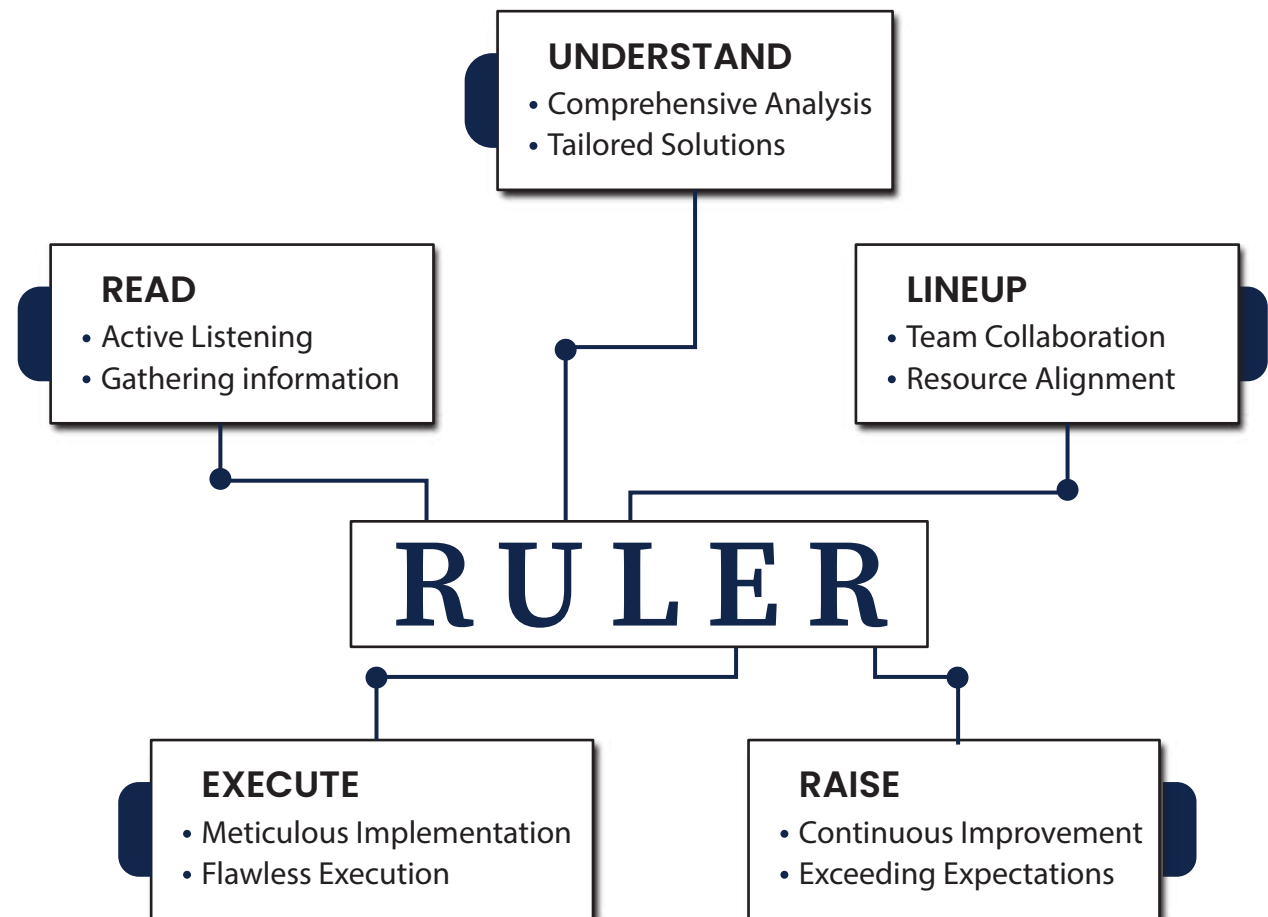
"In a well-structured company, the management team plays a crucial role in ensuring smooth operations and achieving organizational goals. The cohesive management structure ensures efficient functioning, growth, and successful outcomes."





# Why us

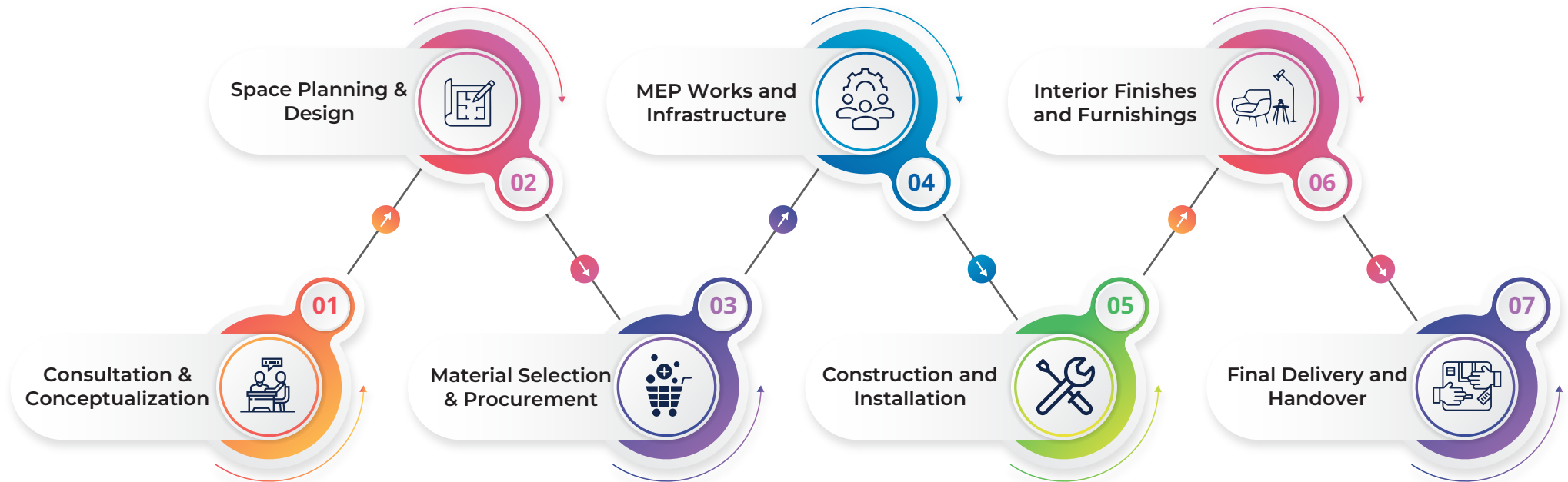
At **RULER ARC**, we pride ourselves on our unique approach to Turnkey projects. We believe in putting our clients first and utilizing the **RULER** framework to ensure exceptional outcomes. Let us explain why you should choose us:



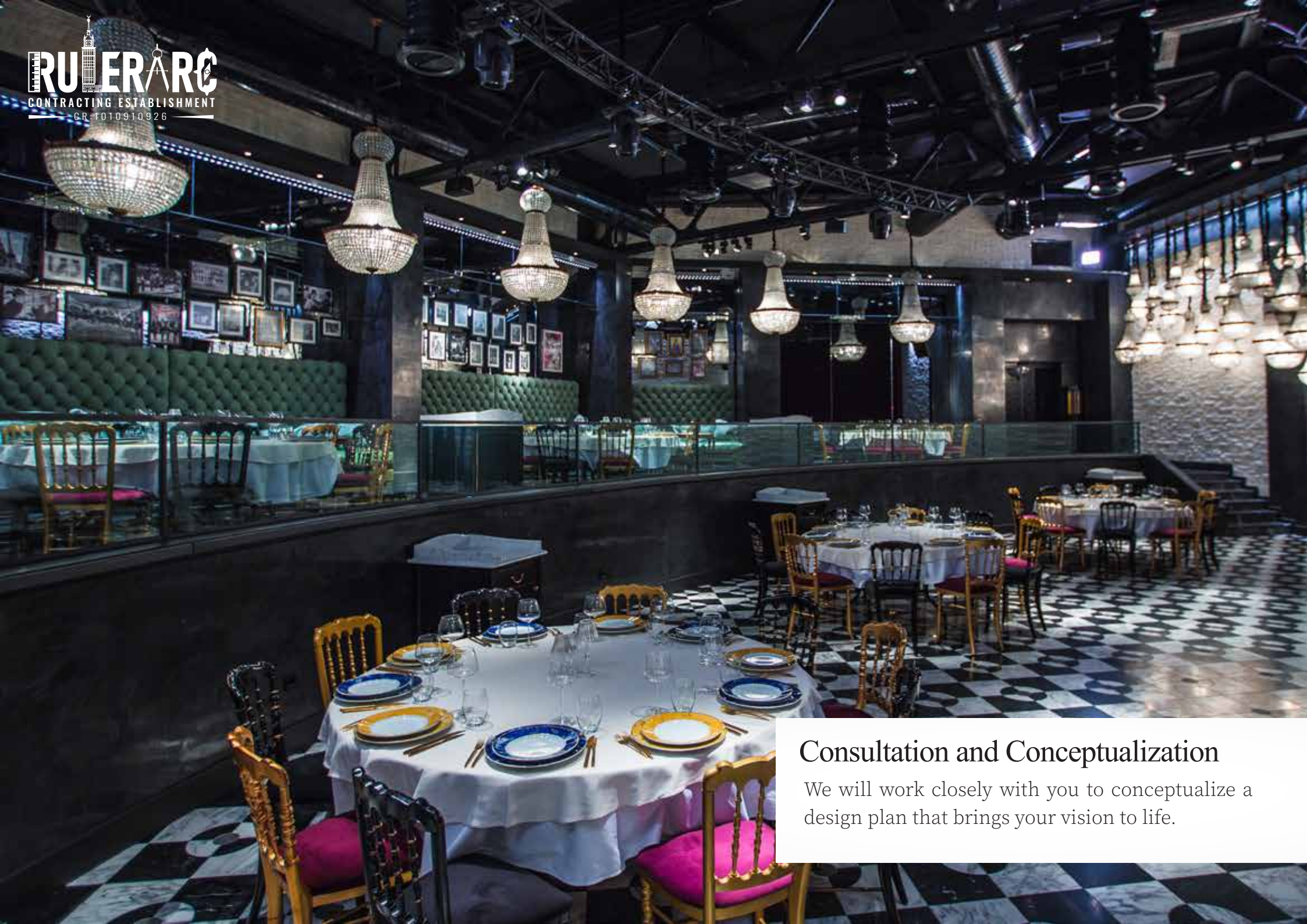
# Turnkey Interior Fitout's

## Shaping your Imaginations

**RACE** believes that every space has the potential to tell a unique and compelling story. Our goal is to turn your visions, ideas, and dreams into functional, aesthetic, and inspiring environments. Whether it's renovating an office space, designing a retail store, or creating a luxurious kiosk, we pride ourselves on our ability to understand and capture your vision.







## Consultation and Conceptualization

We will work closely with you to conceptualize a design plan that brings your vision to life.

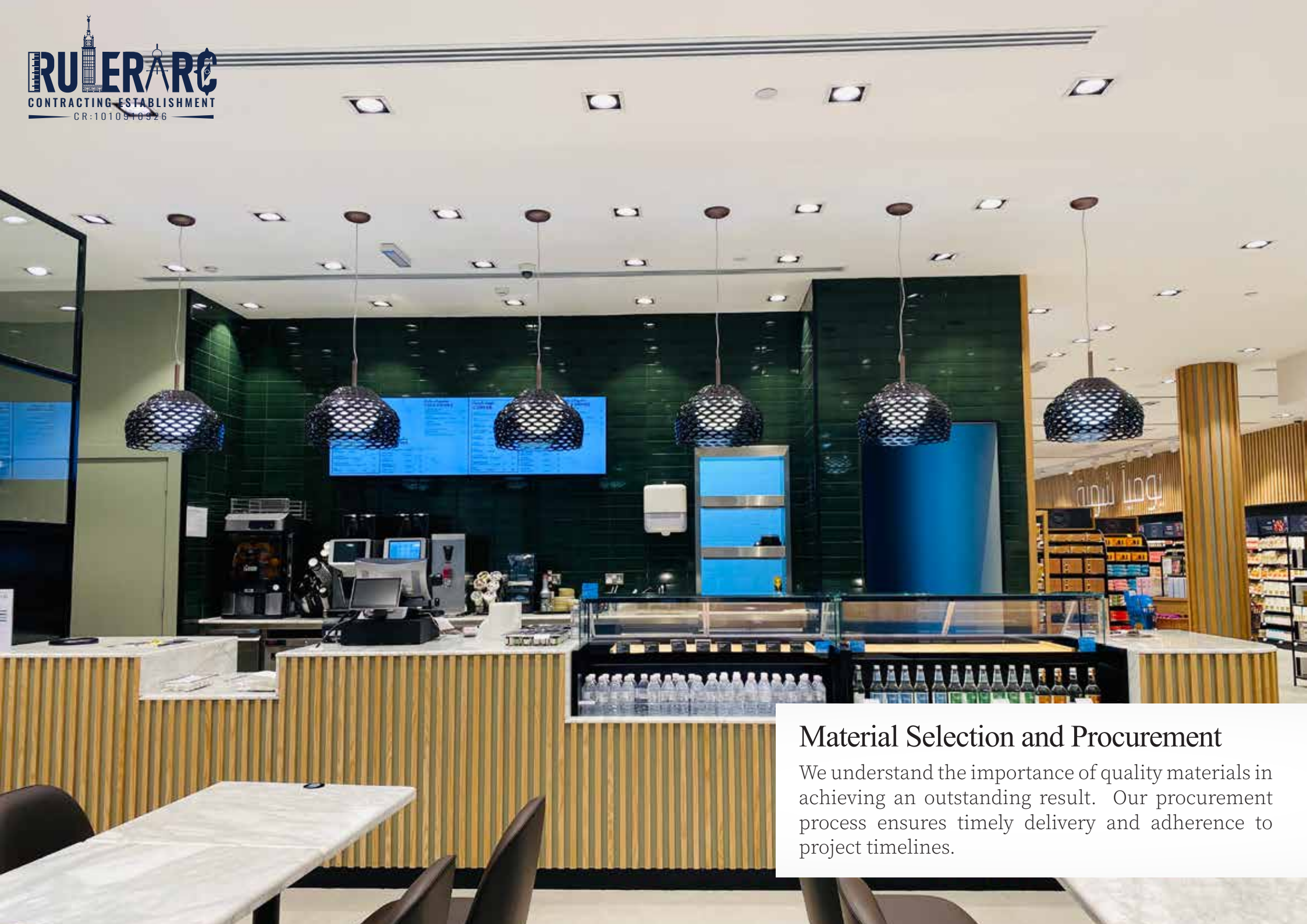




## Space Planning and Design

We aim to optimize every square foot, ensuring efficiency and practicality while maintaining a visually appealing design





## Material Selection and Procurement

We understand the importance of quality materials in achieving an outstanding result. Our procurement process ensures timely delivery and adherence to project timelines.





## MEP Works and Infrastructure

we handle all mechanical, electrical, and plumbing (MEP) works required to transform the shell and core space into a fully operational environment.





## Construction and Installation

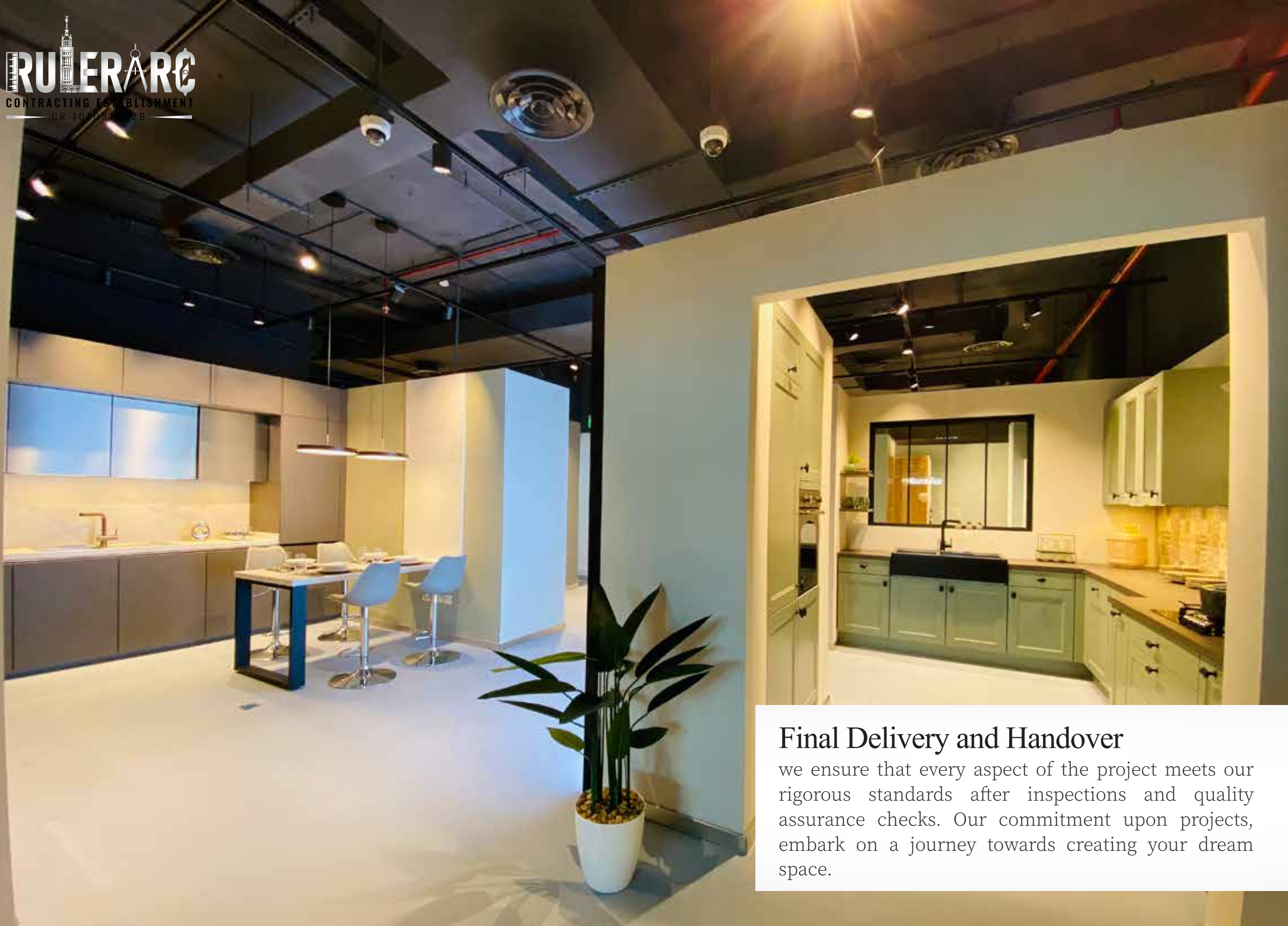
Throughout this phase, we maintain open lines of communication with a network of experienced contractors and craftsmen, we meticulously execute the construction and installation phase of the project





## Interior Finishes and Furnishings

we help you curate a cohesive and personalized atmosphere in selecting the perfect finishes and furnishings that align with your style and enhance the overall aesthetic of the space.



## Final Delivery and Handover

we ensure that every aspect of the project meets our rigorous standards after inspections and quality assurance checks. Our commitment upon projects, embark on a journey towards creating your dream space.



# Our Prestigious Clientele



# Our Prestigious Clientele

baskin **BR** robbins



nichii

Babies & more

eyewa



 **ROHDE & SCHWARZ**

Samsnite



يولا  
YOLA

MICA

STEVE MADDEN



Calvin Klein

PARFOIS



RITUALS...®



AÉROPOSTALE

**Dune**  
L O N D O N

and many more.....



































UNITED COLORS  
OF BENETTON.

























## CONTACT WITH US



info@rulerarc.com



www.rulerarc.com



+966 **55 078 5459**

+966 **50 649 3593**



Build No.1, Al Qalam st,  
Ar Rawdah, Riyadh 13211, KSA



011 200 9122

